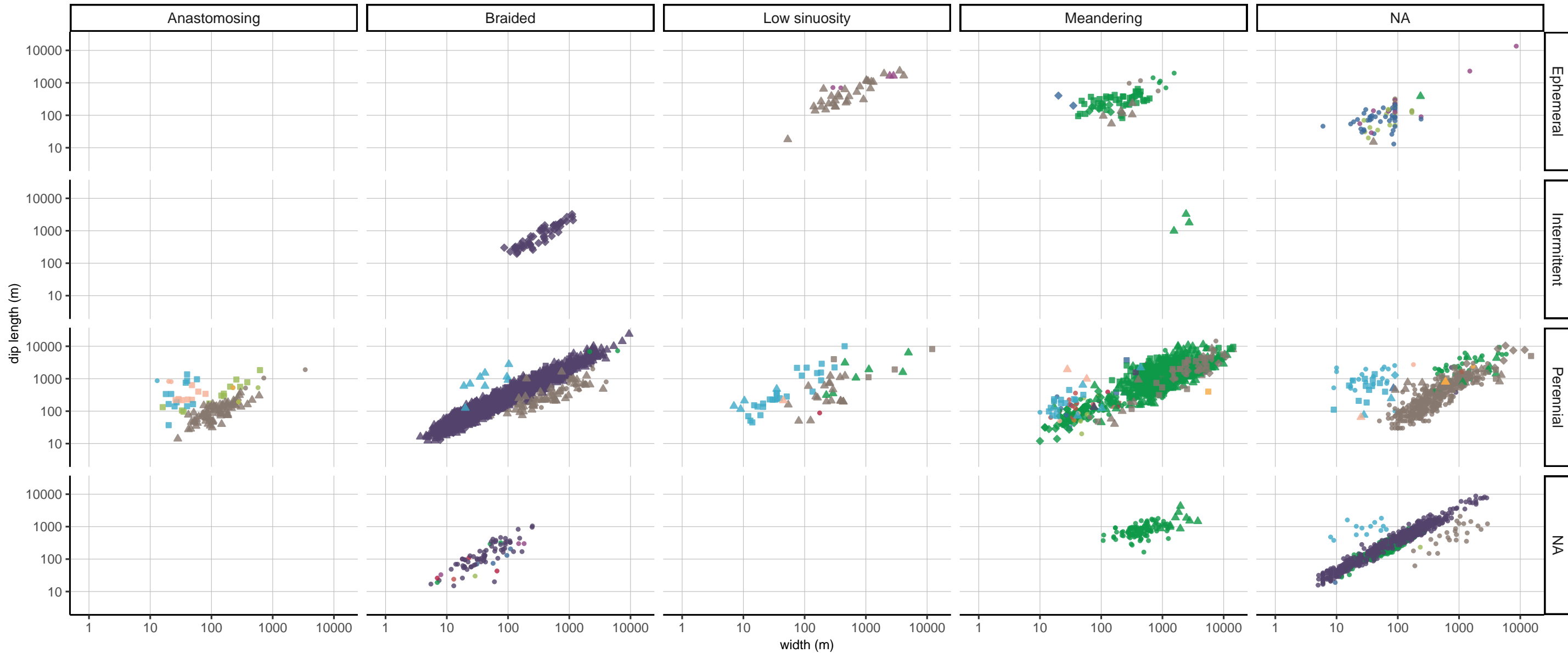


AC CR DLA LA SF
 element type C CS FF LC SG
 CH DA HO LV

depositional setting ○ Alluvial fan △ Alluvial valley □ Coastal alluvial plain ◇ Fluvial fan • NA

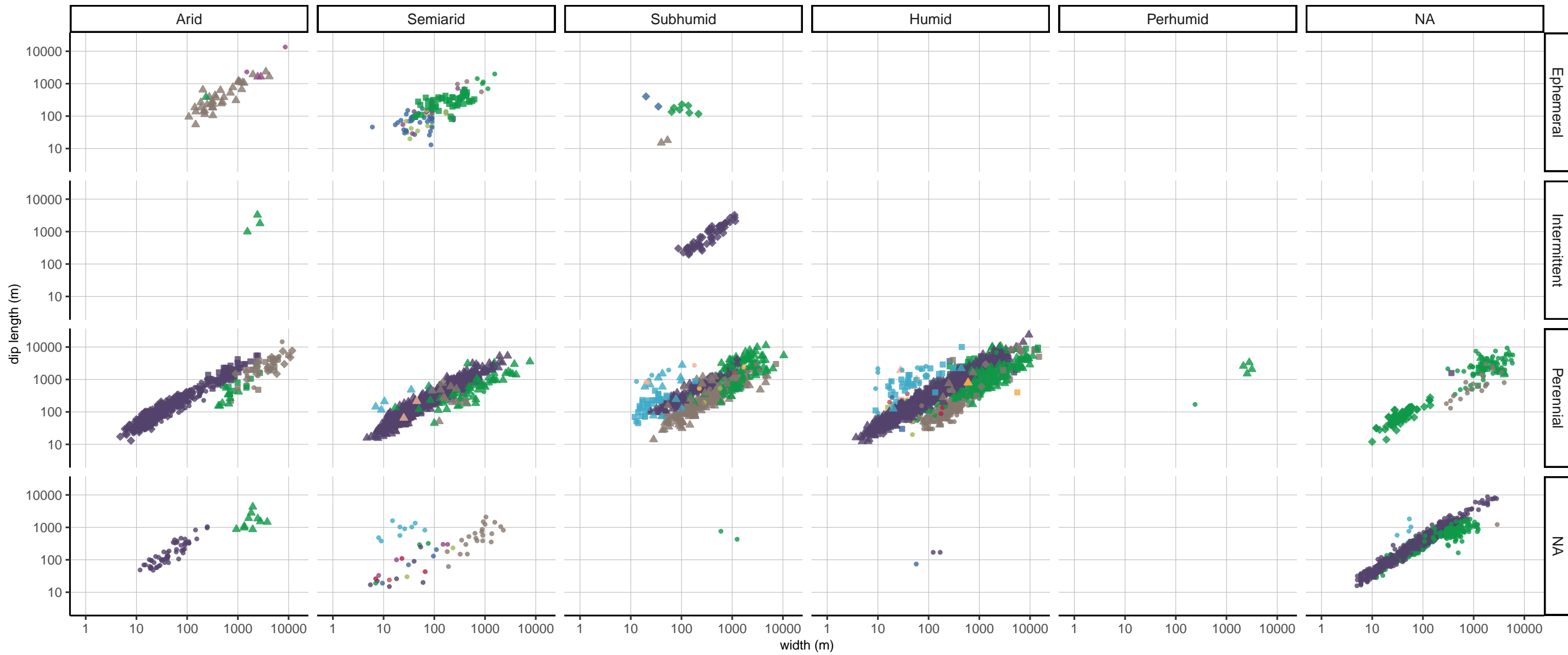
element width vs length, by depositional setting, river pattern, discharge regime

including apparent/incomplete dimensions



element width vs length, by depositional setting, discharge regime, basin climate

including apparent/incomplete dimensions



Scatterplots of length vs width of architectural elements for groups of analogues classified on combinations of river pattern and depositional setting (top panel) and basin climate and discharge regime (bottom panel).

Shapes of data points indicate the depositional setting. Data include incomplete and apparent measurements ($n = 4,948$). NA indicates unclassified analogues.

AC: abandoned-channel fill, C: coal body, CH: aggradational channel fill, CR: crevasse-channel fill, CS: crevasse splay, DA: downstream-accretion barform, DLA: downstream-/lateral-accretion barform, FF: floodplain fines, HO: scour-hollow fill, LA: lateral-accretion barform, LC: floodplain lake, LV: levee, SF: sand-prone overbank, SG: sediment-gravity-flow body