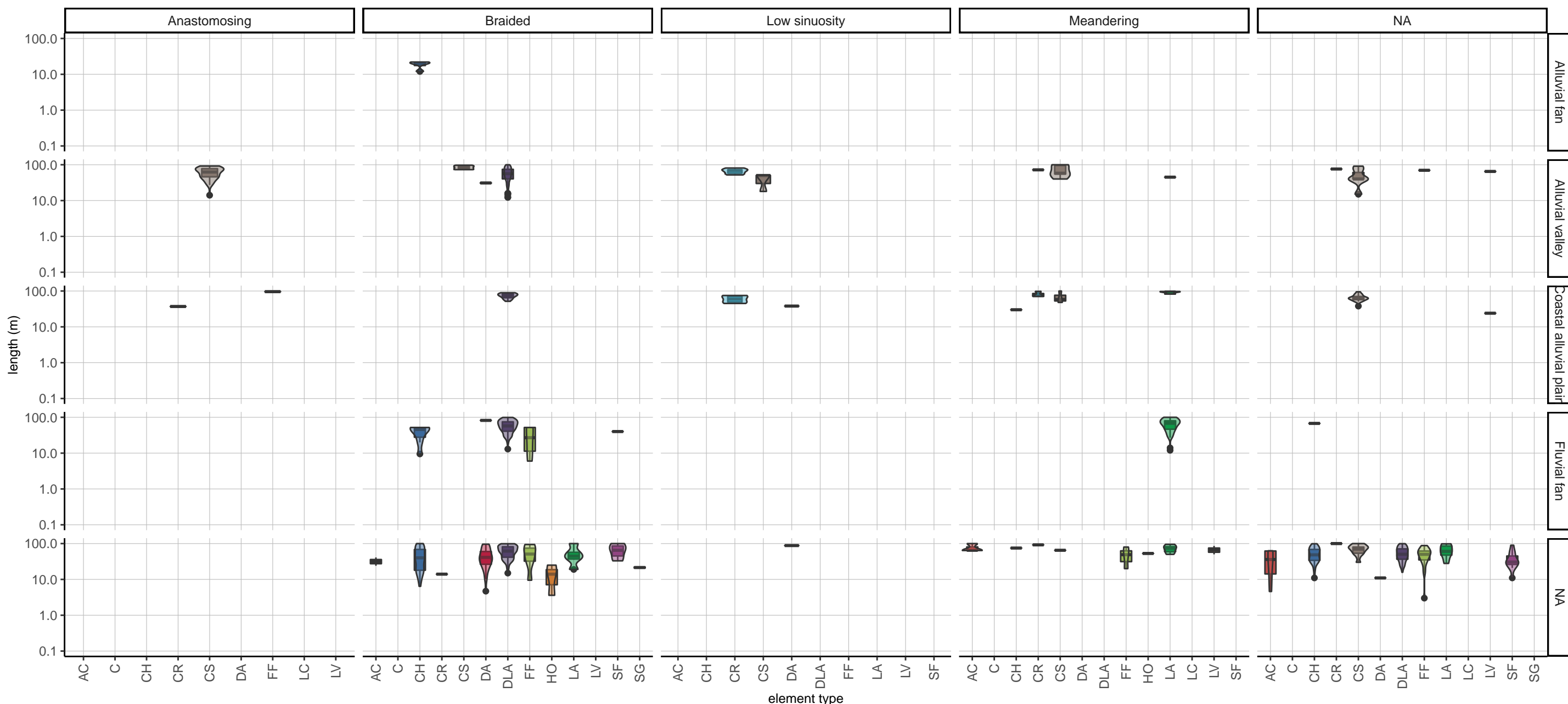


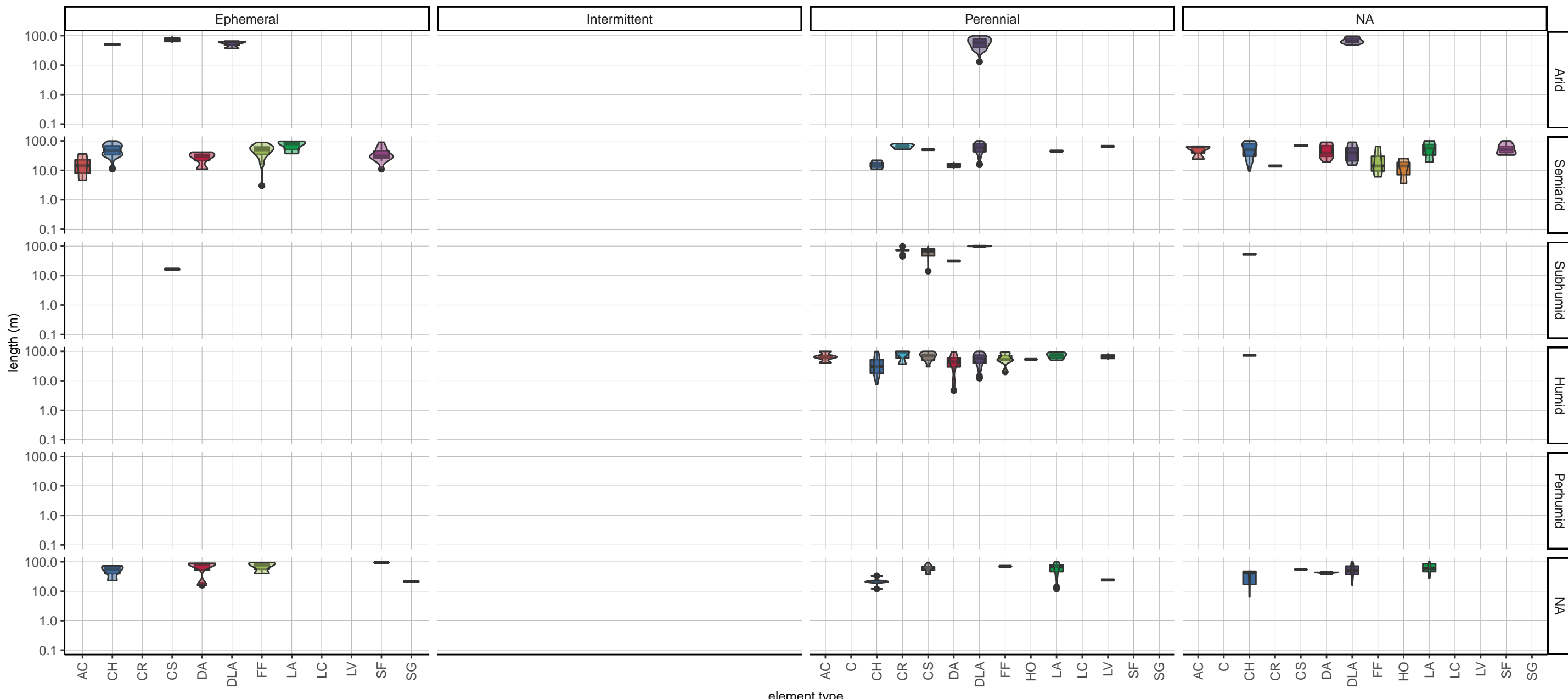
architectural–element dip–length distributions by depositional setting and river pattern

including apparent and incomplete lengths



architectural–element dip–length distributions by basin climate and discharge regime

including apparent and incomplete lengths



Boxplots and violin plots of thickness distributions of architectural elements for groups of analogues classified on combinations of river pattern and depositional setting (top panel) and basin climate and discharge regime (bottom panel).

Boxes represent interquartile ranges, horizontal bars median values. Data include incomplete length measurements (n = 5,444). NA indicates unclassified analogues.

AC: abandoned–channel fill, C: coal body, CH: aggradational channel fill, CR: crevasse–channel fill, CS: crevasse splay, DA: downstream–accretion barform, DLA: downstream–/lateral–accretion barform,

FF: floodplain fines, HO: scour–hollow fill, LA: lateral–accretion barform, LC: floodplain lake, LV: levee, SF: sand–prone overbank, SG: sediment–gravity–flow body