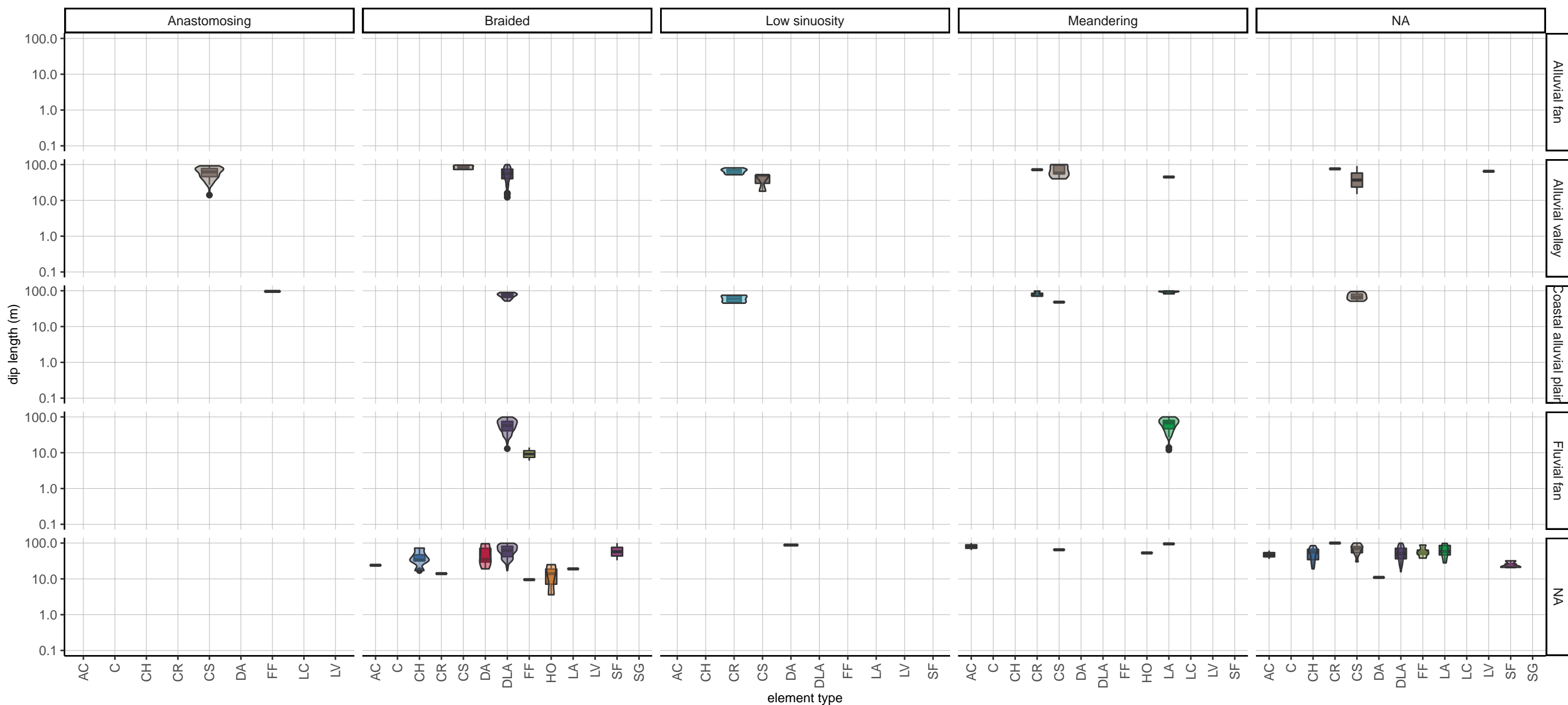


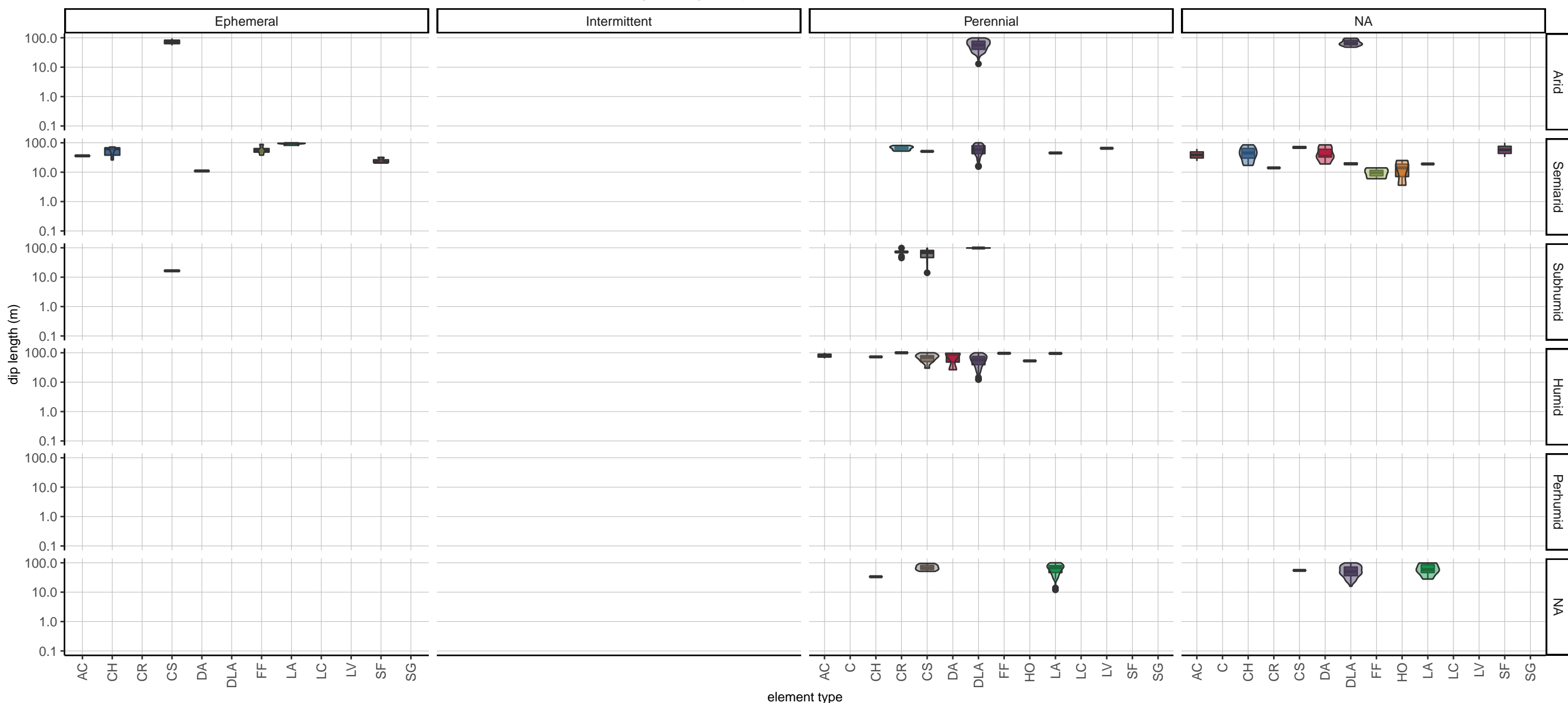
architectural–element dip–length distributions by depositional setting and river pattern

including true lengths only



architectural–element dip–length distributions by basin climate and discharge regime

including true lengths only



Boxplots and violin plots of width distributions of architectural elements for groups of analogues classified on combinations of river pattern and depositional setting (top panel) and basin climate and discharge regime (bottom panel).

Boxes represent interquartile ranges, horizontal bars median values. Data on true length measurements only (n = 4,884). NA indicates unclassified analogues.

AC: abandoned–channel fill, C: coal body, CH: aggradational channel fill, CR: crevasse–channel fill, CS: crevasse splay, DA: downstream–accretion barform, DLA: downstream–/lateral–accretion barform,

FF: floodplain fines, HO: scour–hollow fill, LA: lateral–accretion barform, LC: floodplain lake, LV: levee, SF: sand–prone overbank, SG: sediment–gravity–flow body